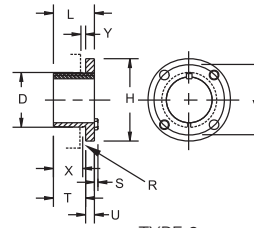
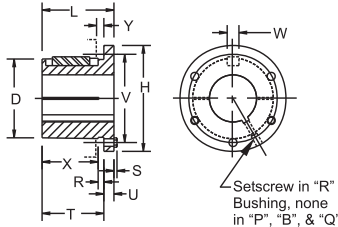


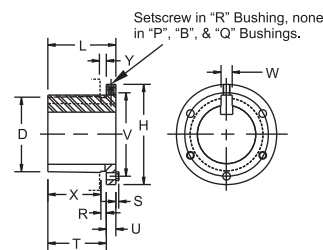
TYPE 1 "G" & "H" BUSHINGS



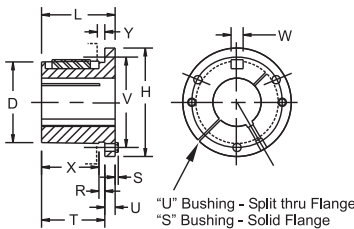
TYPE 2



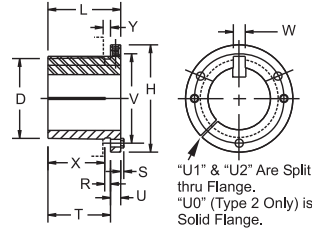
TYPE 1 "P", "B", "Q" & "R" BUSHING



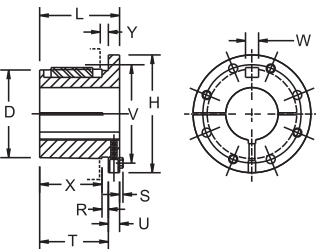
TYPE 2



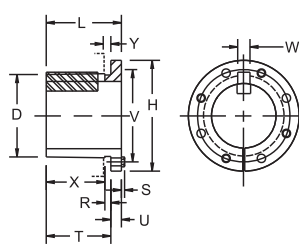
TYPE 1 "S" & "U" BUSHINGS



TYPE 2



TYPE 1 "W" & "Y" BUSHINGS



TYPE 2

TABLE No. 1

BUSHING SPECIFICATIONS

PART No	DIMENSIONS												BORE RANGE		CAP SCREWS		AV. WT. LBS.	WRENCH TORQUE In-Lbs.
	L	U	T	D		H	V	W	X	Y	R	S	TYPE 1	TYPE 2	No.	SIZE		
				LARGE END	SMALL END													
G	1	1/4	3/4	1.172	1.134	2	1 9/16	-	10/16	3/16	1/8	3/16	3/8 - 15/16	1	2	1/4-20 x 5/8	0.5	95
H	1 1/4	1/4	1	1.625	1.571	2 1/2	2	-	14/16	3/16	1/8	3/16	3/8 - 1 1/8	1 7/16 - 1 1/2	2	1/4-20 x 5/8	0.8	95
P1	1 15/16	3/8	1 9/16	1.938	1.856	3	2 7/16	3/8	1 5/16	5/16	1/4	13/64	1/2 - 1 7/16	1 1/2 - 1 3/4	3	5/16-18 x 1	1.3	192
P2	2 15/16	3/8	2 9/16	1.938	1.793	3	2 7/16	3/8	2 5/16	5/16	1/4	13/64	3/4 - 1 7/16	1 1/2 - 1 3/4	3	5/16-18 x 1	1.5	192
P3	4 7/16	3/8	4 1/16	1.938	1.699	3	2 7/16	3/8	3 13/16	5/16	1/4	13/64	1 1/8 - 1 3/8	1.625	3	5/16-18 x 1	1.5	192
B	1 15/16	1/2	1 7/16	2.625	2.557	3 11/16	3 2/16	1/2	1 1/16	3/8	5/16	13/64	1/2 - 1 15/16	2 - 2 7/16	3	5/16-18 x 1 1/4	1.8	192
Q1	2 1/2	1/2	2	2.875	2.769	4 1/8	3 3/8	1/2	1 11/16	3/8	1/4	15/64	3/4 - 2 1/16	2 1/8 - 2 11/16	3	3/8-16 x 1 1/4	3.5	348
Q2	3 1/2	1/2	3	2.875	2.707	4 1/8	3 3/8	1/2	2 11/16	3/8	1/4	15/64	1 - 2 1/16	2 1/8 - 2 5/8	3	3/8-16 x 1 1/4	4.5	348
Q3	5	1/2	4 8/16	2.875	2.613	4 1/8	3 3/8	1/2	4 3/16	3/8	1/4	15/64	1 3/8 - 2 1/16	2 1/8 - 2 1/2	3	3/8-16 x 1 1/4	5.5	348
R1	2 7/8	5/8	2 1/4	4.000	3.877	5 3/8	4 5/8	3/4	1 15/16	5/16	1/4	15/64	1 1/8 - 2 13/16	2 7/8 - 3 3/4	3	3/8-16 x 1 3/4	7.5	348
R2	4 7/8	5/8	4 1/4	4.000	3.752	5 3/8	4 5/8	3/4	3 15/16	5/16	1/4	15/64	1 - 2 1/16	2 1/8 - 2 5/8	3	3/8-16 x 1 3/4	11	348
S1	4 3/8	3/4	3 5/8	4.623	4.420	6 3/8	5 3/8	3/4	3 1/4	7/16	3/8	5/16	1 11/16 - 3 3/16	3 1/4 - 4 1/4	3	1/2-13 x 2 1/4	13.5	840
S2	6 3/4	3/4	6	4.623	4.272	6 3/8	5 3/8	3/4	5 5/8	7/16	3/8	5/16	1 7/8 - 3 3/16	3 1/4 - 4 3/16	3	1/2-13 x 2 1/4	19	840
U0	4 15/16	3/4	4 3/16	5.997	5.768	8 3/8	7	1 1/4	3 11/16	9/16	1/2	3/8	2 3/8 - 4 1/4	4 3/8 - 5 1/2	3	5/8-11 x 2 3/4	27	1680
U1	7 1/8	1 3/16	5 15/16	5.997	5.658	8 3/8	7	1 1/4	5 7/16	9/16	1/2	3/8	2 3/8 - 4 1/4	4 3/8 - 5 1/2	3	5/8-11 x 2 3/4	40	1680
U2	10 1/8	1 3/16	8 15/16	5.997	5.471	8 3/8	7	1 1/4	8 7/16	9/16	1/2	3/8	2 7/16 - 4 1/4	4 3/8 - 5	3	5/8-11 x 2 3/4	50	1680
W1	8 1/4	1 7/16	6 13/16	8.496	8.104	12 1/2	10	1 1/4	6 1/4	9/16	1/2	1/2	3 3/8 - 6 3/16	6 1/4 - 7 7/16	4	3/4-10 x 3	104	3000
W2	11 1/4	1 7/16	9 13/16	8.496	7.916	12 1/2	10	1 1/4	9 1/4	9/16	1/2	1/2	3 3/8 - 6 3/16	6 1/4 - 7 7/16	4	3/4-10 x 3	133	3000
Y0	11 1/8	2	9 1/8	12.000	11.469	16 1/2	14 1/2	2	8 1/2	11/16	5/8	5/8	6 - 7 15/16	8-10	4	1-8 x 5	270	7200

TABLE No. 2 - FLANGE SET SCREW

	THREAD	TIGHTENING TORQUE (in-lb)
R	5/16-18	165
S.U	3/8-16	290
W.Y	1/2-13	620

R1 - 1 1/8, R1 3/16, R2 1 3/8, S1 1 11/16, S1 1 3/4 and S2 1 7/8" to 2 1/8" Bushings are steel. U0 and U1 2 3/8" to 3 3/16" and U2 2 7/16" to 3 3/16" are cast iron. "W" and "Y" Bushings are cast iron. All other Bushings on this page are either sintered steel, malleable iron or ductile iron.
 Contact Factory for clarification. Y Bushings are made-to-order.
 Note: Taper on all Browning Split Bushings is 3/4" per foot on diameter.